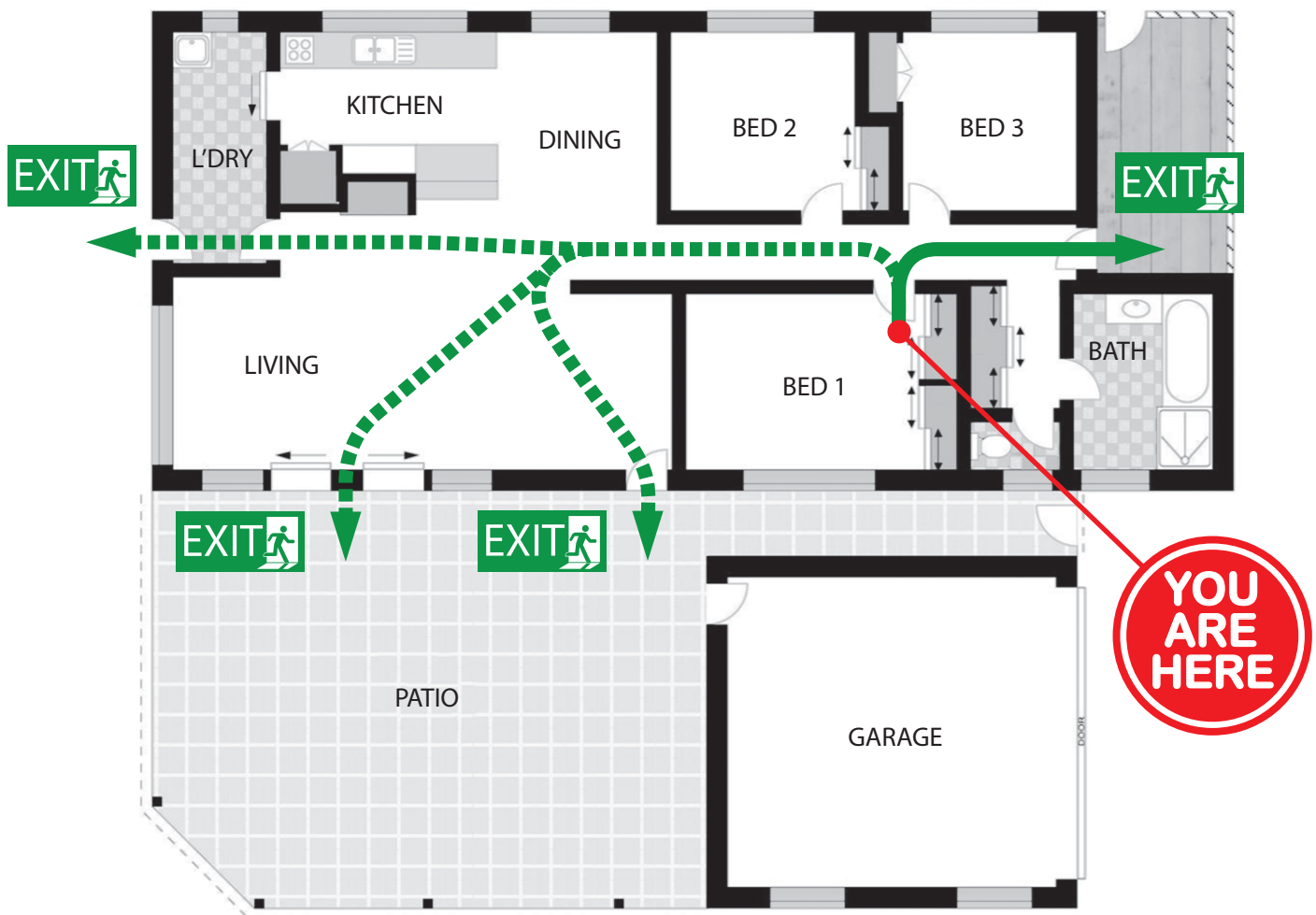
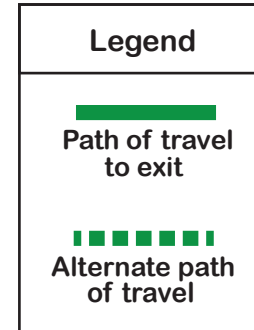


# EVACUATION DIAGRAM

89 Elanora Avenue, Pottsville, NSW 2489

Date of Issue 21st February 2025  
Valid to 21st February 2030  
STRA Evacuation Plans  
info@straevacplans.com

Evacuation  
assembly area  
next to driveway



Not to scale



In an emergency call  
Triple Zero (000)

It is the responsibility of the owner to ensure that this diagram is current and accurate

Guests are advised to download  
the "Emergency+" app

A free app developed by Australia's emergency services  
& their Government and industry partners.

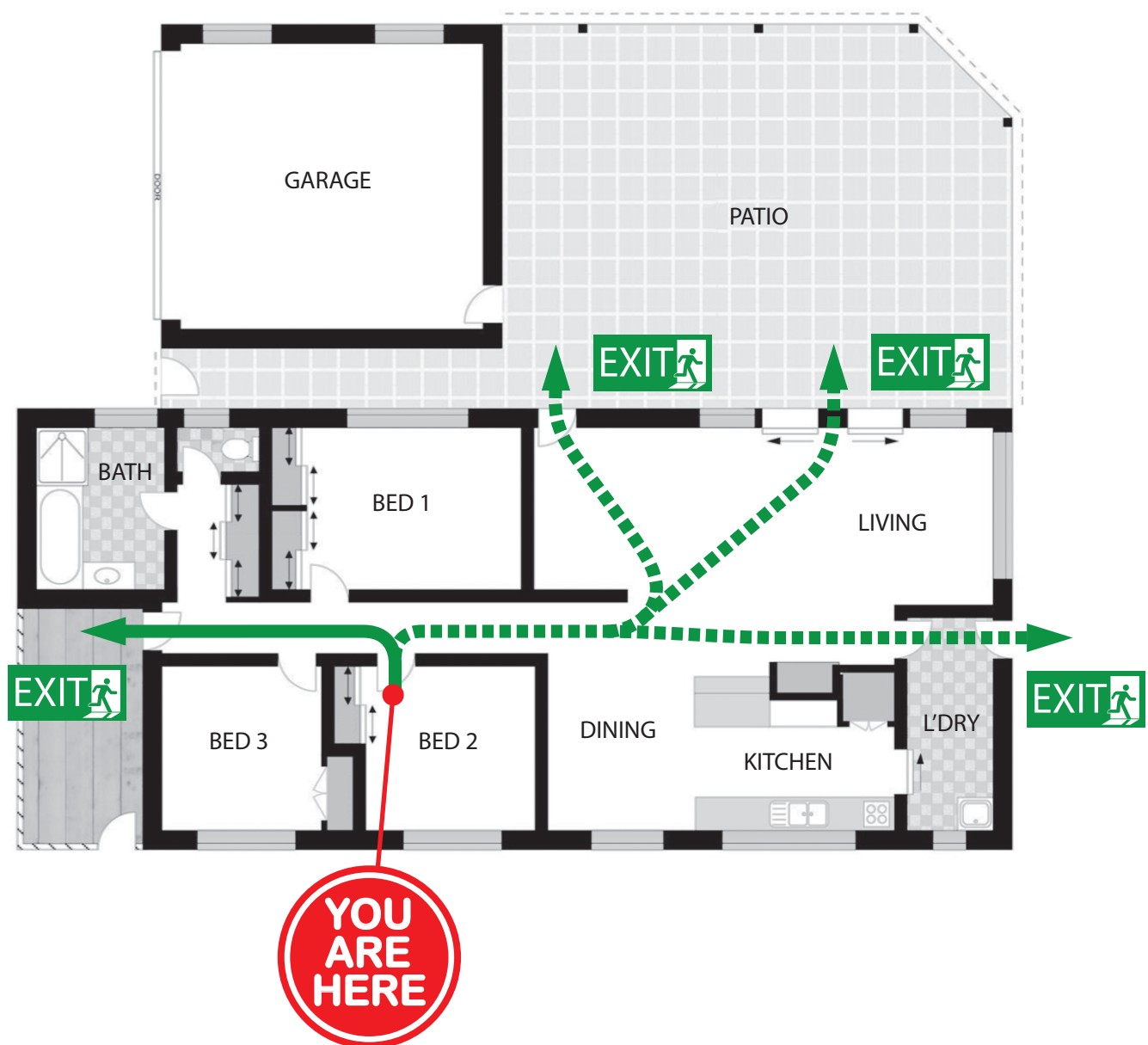
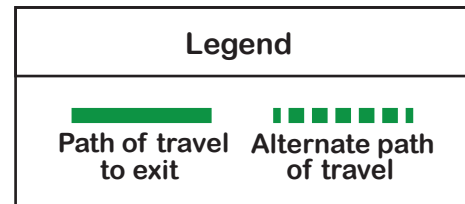


# EVACUATION DIAGRAM

89 Elanora Avenue, Pottsville, NSW 2489

Date of Issue 21st February 2025  
Valid to 21st February 2030  
STRA Evacuation Plans  
info@straevacplans.com

**Evacuation  
assembly area  
next to driveway**



Not to scale



**In an emergency call  
Triple Zero (000)**

It is the responsibility of the owner to ensure that this diagram is current and accurate

**Guests are advised to download  
the "Emergency+" app**

A free app developed by Australia's emergency services  
& their Government and industry partners.

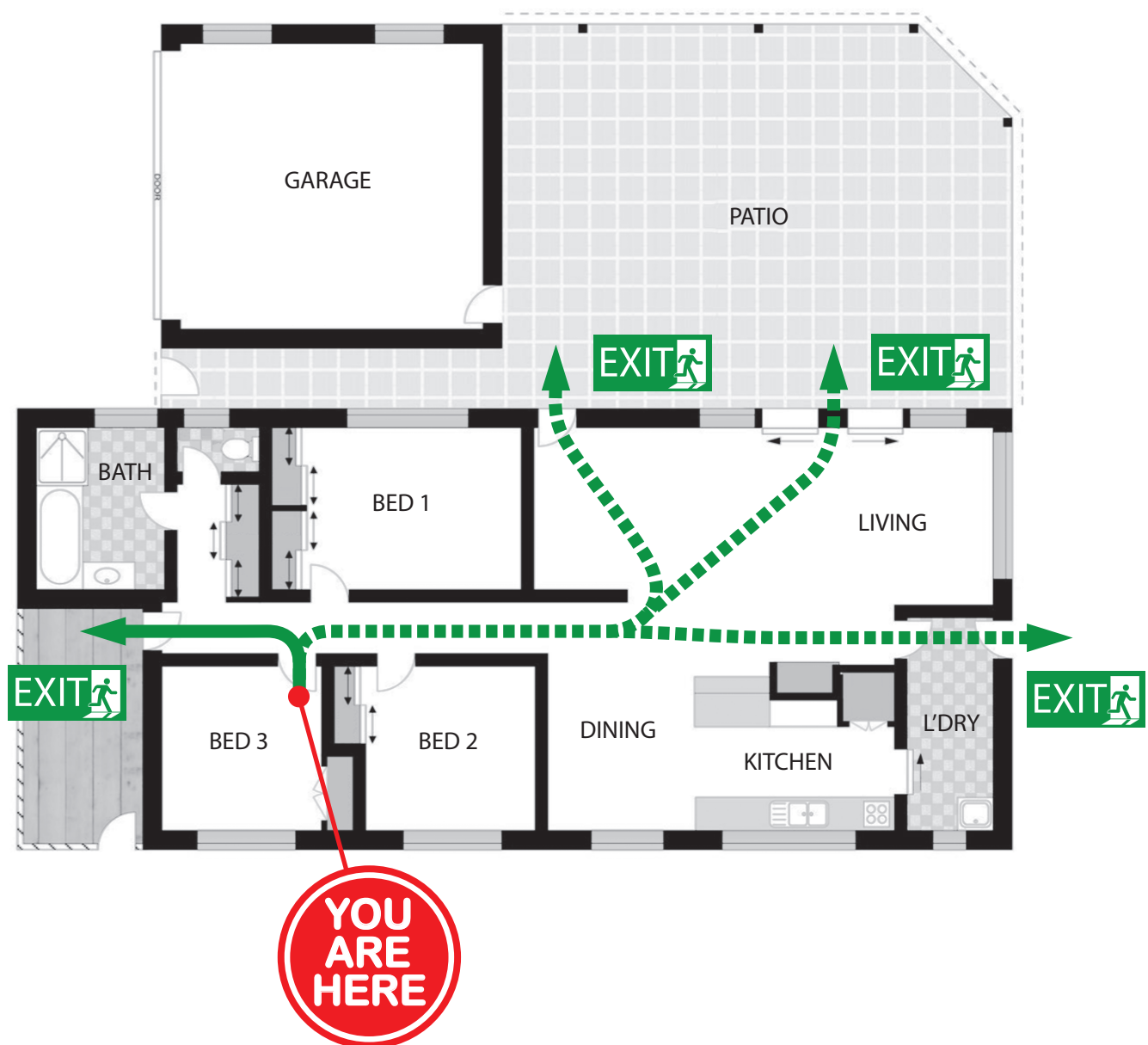
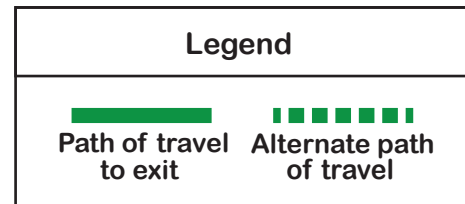


# EVACUATION DIAGRAM

89 Elanora Avenue, Pottsville, NSW 2489

Date of Issue 21st February 2025  
Valid to 21st February 2030  
STRA Evacuation Plans  
info@straevacplans.com

Evacuation  
assembly area  
next to driveway



Not to scale



In an emergency call  
Triple Zero (000)

It is the responsibility of the owner to ensure that this diagram is current and accurate

Guests are advised to download  
the "Emergency+" app

A free app developed by Australia's emergency services  
& their Government and industry partners.

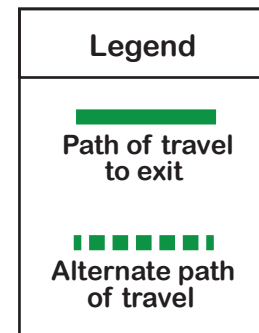


# EVACUATION DIAGRAM

89 Elanora Avenue, Pottsville, NSW 2489

Date of Issue 21st February 2025  
Valid to 21st February 2030  
STRA Evacuation Plans  
info@straevacplans.com

Evacuation  
assembly area  
next to driveway



Not to scale



In an emergency call  
Triple Zero (000)

It is the responsibility of the owner to ensure that this diagram is current and accurate

Guests are advised to download  
the "Emergency+" app

A free app developed by Australia's emergency services  
& their Government and industry partners.

